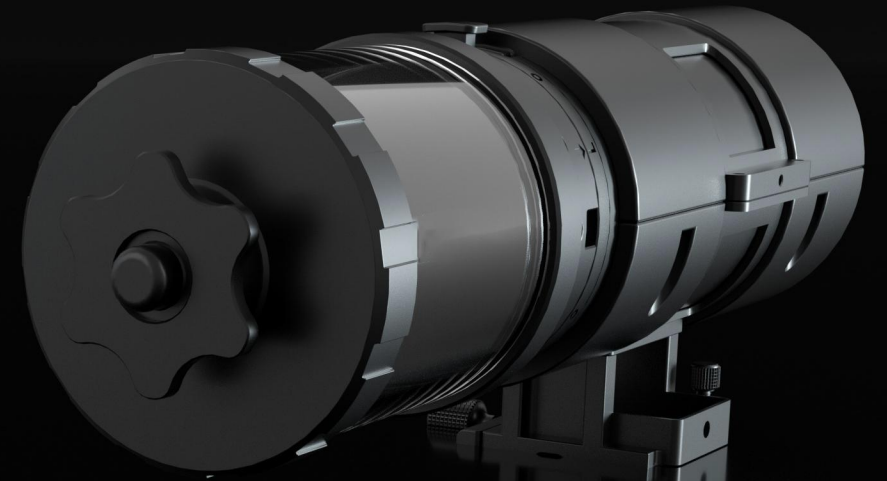


CHASING

CHASING WaterSampler (500ml)

Stratified Spot Sampling ,Super Large Capacity

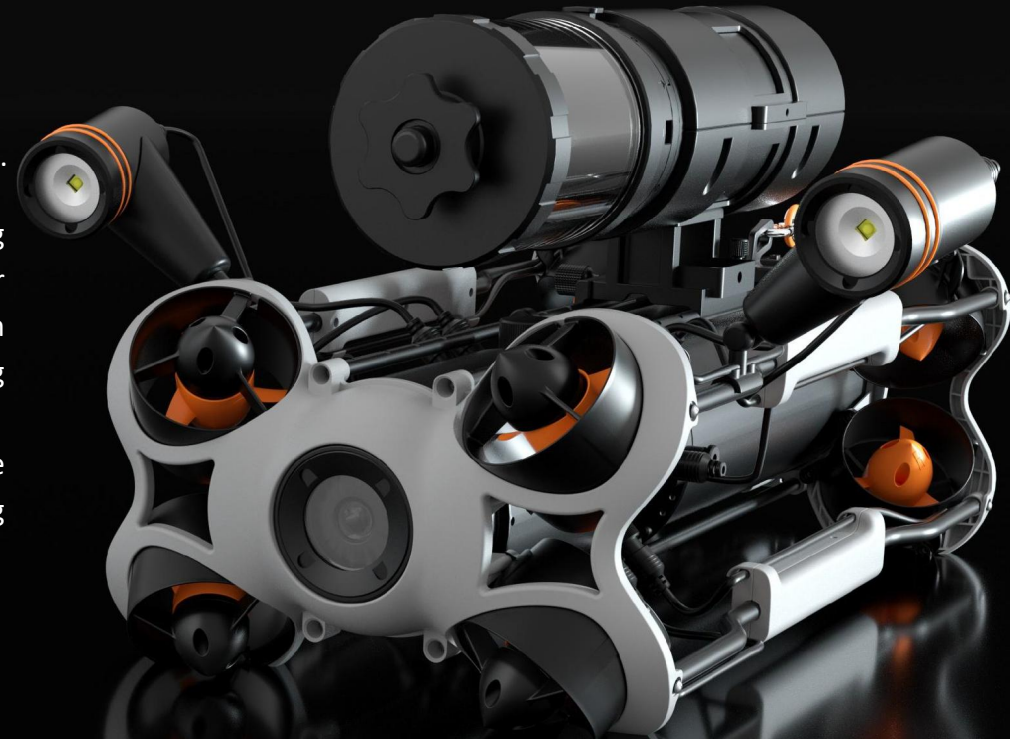
| For CHASING M2 PRO and CHASING M2 PRO MAX users



CHASING Water Sampler (500ml)

An exclusive accessory developed for CHASING M2 PRO and CHASING M2 PRO MAX.

The CHASING water sampler supports stratified spot sampling (0-200m), satisfying the needs of comprehensive detection of the target water; With 500ml of super large sampling capacity, it can achieve multiple samples detection with one-turn water collection; In order to ensure sample safety, it is designed with super sealing property, which allows no water leakage even after thousands of tests; It is made of environmentally friendly materials and certified by many countries. It can be equipped with multiple sampling bottles, which are flexible and easy to use, saving time and effort for water sampling.



Stratified Spot Sampling in 0-200m Water Depth

CHASING

ROV, equipped with water sampler, is able to achieve precise hovering at a fixed point and stratified spot sampling within the water depth range of 0-200m in the target waters, so as to provide precise samples for detection.

50M

100M

150M

200M

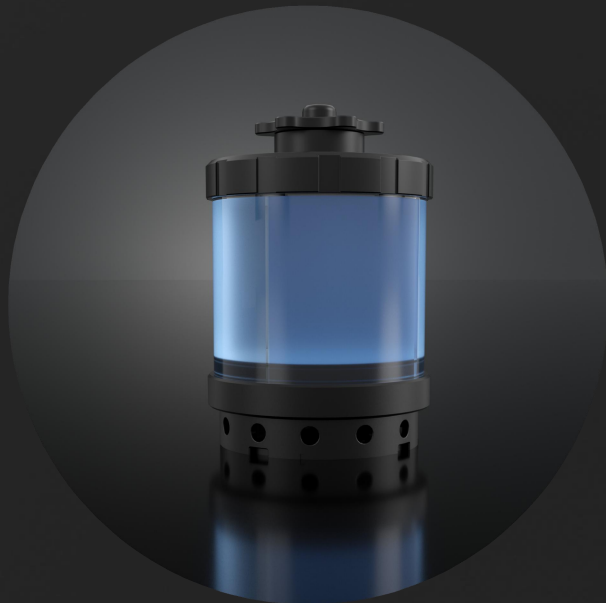


Precise hovering and sampling at a fixed point

500ml of Super Large Capacity

Multiple Samples Detection with One-turn Water Collection

The CHASING water sampler can sample 500ml in 8 seconds by means of motor suction. Enough water for detection can be obtained only through one ROV underwater operation, improving the efficiency of sample acquisition and detection.

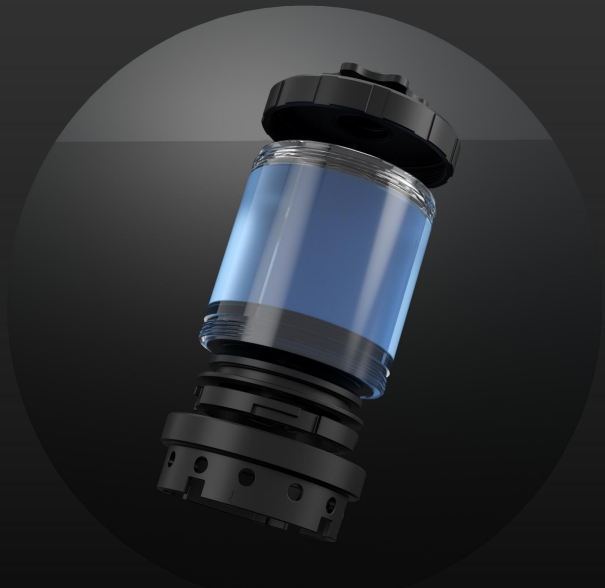


500ml of Super Large Capacity



Super Sealing, Sample Protection

After thousands of tests, the CHASING water sampler achieves no water leakage during operation, fully ensuring the safety of samples in the target waters and the accuracy of the detection report.

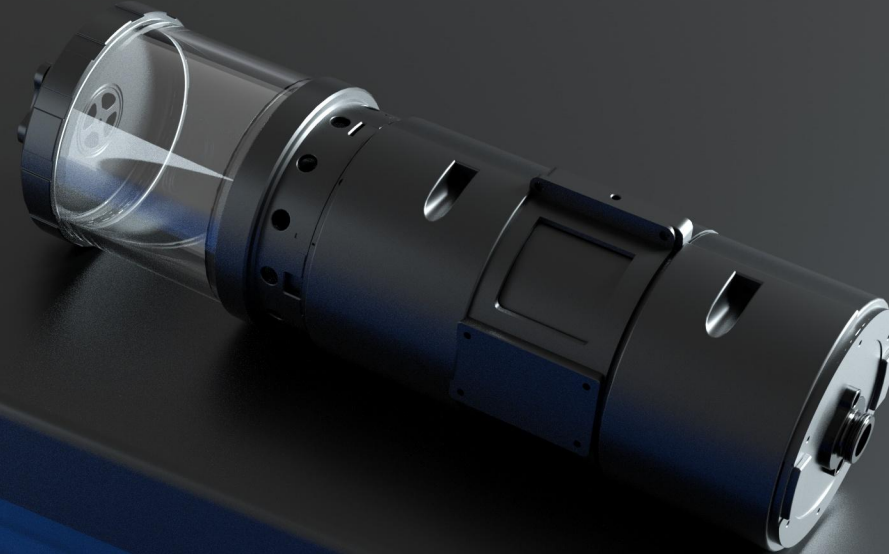


Match exactly without water leakage



Environmental Protection Material, Certified by Multiple Countries

The CHASING water sampler is mainly made of 6061 aluminium alloy, POM and PMMA, obtaining ROHS certificate and imposing no pollution to the sampled waters.



Replaceable Sampling Bottle, Flexible and Easy to Use

The CHASING water sampler can be equipped with multiple sampling bottles, which can be disassembled and replaced immediately after water sampled ashore to facilitate the second sampling, saving time and effort in water sampling and detection;

Replacing bottles for sampling avoids residue attachment and ensures the sample and detection accuracy to the greatest extent.



Product Parameters

Parameter Table of CHASING Water Quality Sampler (500ml)	
Dimension	φ106*375mm
Air weight	2.2kg
Pressure withstand depth	200m
Water sampling capacity	500ml
Operating voltage	DC 24V
Operating temperature	-10~45°C

CHASING

CHASING Water Sampler (500ml)

Stratified Spot Sampling Super Large Capacity



www.chasing.com