

Hydro-Tech SS3060 / SS4090

Dual Frequency Side Scan Sonar



Optional for 300/600kHz or 400/900kHz



High Resolution

SS3060 and SS4090 adopt pulse compression and ultra short pulse transmission to increase cross-track resolution.



Image Clarity

Variable aperture dynamic focusing technology increases the near-field and far-field resolution.



Image Equalisation

Innovative image equalisation technology to enhance image contrast and definition.

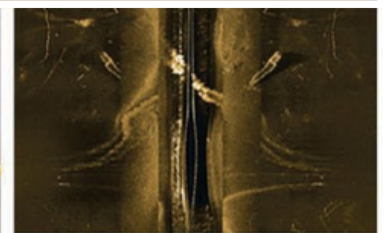
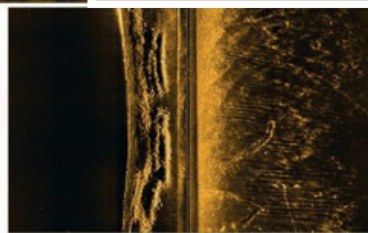


◀ Learn More

Hydro-Tech SS3060 / SS4090 Dual Frequency Side Scan Sonar



SS3060 / SS4090 (Seagull) is a dual frequency broadband high-definition side-scan sonar unit designed to fit the general requirements of a wide diversity of industry customers. This product adopts our innovative broadband signal processing, variable aperture technology, image equalisation and 4K HD display technology to achieve wide scanning and high definition. The SS3060 / SS4090 has been widely used in shallow water applications including; underwater infrastructure inspection, pipeline investigation, emergency and rescue, underwater archeological survey, marine environment investigation and protection.



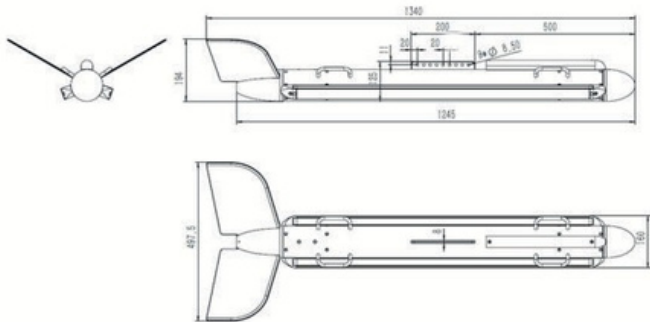
Applications


Construction
Inspection


Emergency
and Rescue


Pipeline
Investigation


Archaeological
Survey



Software

Display & Control Software HydroSonar
Other Software Compatible with Hypack or SonarWiz



Technical Specifications

Working Frequency	300kHz / 600kHz (SS3060) 400kHz / 900kHz (SS4090)
Signal Bandwidth	60kHz
Max Slant Range	230m @300kHz / 120m @600kHz 150m @400kHz / 75m @900kHz
Horizontal Beam Width	0.28°@300kHz / 0.26°@600kHz 0.21°@400kHz / 0.2°@900kHz
Vertical Beam Width	50°
Across Track Resolution	2.5cm @300kHz / 1.25cm @600kHz 1.25cm @400kHz / 1cm @900kHz
Along Track Resolution	300kHz: 0.24m @50m; 0.49m @ 100m; 0.73m @150m 600kHz: 0.09m @20m; 0.23m @50m; 0.34m @75m 400kHz: 0.18m @50m; 0.27m @ 75m; 0.37m @100m 900kHz: 0.07m @20m; 0.17m @50m; 0.26m @75m
Signal Type	CW/Chirp
Working Depth	300m
Auxiliary Sensors	Pressure Sensor and IMU for Roll, Pitch and Heading

Physical Specifications

Towfish Size	φ100 x 1200mm
Towfish Weight	25kg (In Air) / 12kg (In water)
Sonar Interface Module Size	208 x 127 x 66 mm
Sonar Interface Module Weight	1.6kg
Power Supply	DC 20-36V or AC 110-240V
Power Consumption	60W
Cable Length	Standard 50m (200m Optional)
Data Interface	Ethernet Cable
Working Temperature	-2° ~ 40°C
Storage Temperature	-20°C ~ 55°C

All spec. above is subject to change without notice

 sales@alphageouk.com
 01367 243203

AlphaGeo
Unit 5a, RAC Estate
Park Road, Faringdon
SN7 7BP

